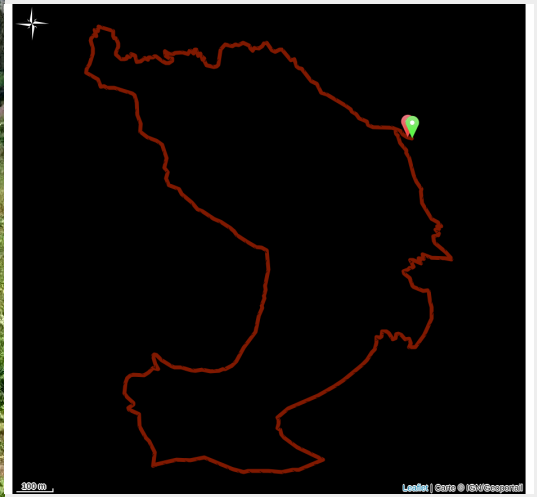


# Trail of Pissus

Lauzière - BONNEVAL-TARENTEISE



(ccva)



*Loop through the Lauzière massif which gives this place all its mineral dimension.*

## Useful information

---

Practice : Trail

---

Duration : 45 min

---

Length : 5.9 km

---

Trek ascent : 466 m

---

Difficulty : Difficult

---

Type : Loop

---

Themes : Flora , Lake and glacier, Viewpoint

# Trek

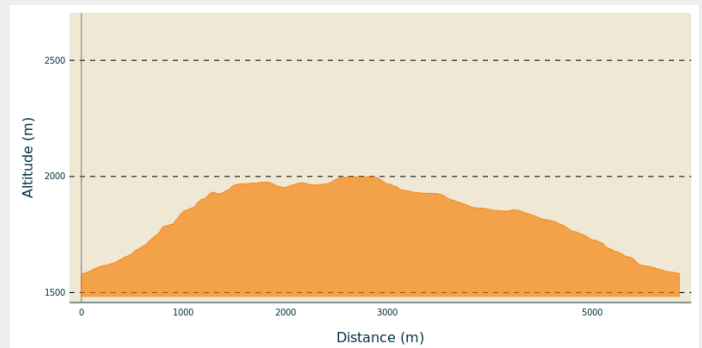
**Departure** : Parking du Gelon

**Arrival** : Parking du Gelon

**Markings** : — PR

**Cities** : 1. BONNEVAL-TARENTEISE

## Altimetric profile



Min elevation 1581 m Max elevation 2000 m

The landscape is grandiose, the Massif gives this place all its mineral dimension, it overhangs you from its most beautiful summits such as the Pointe des Marmottes noires 2339 m and Combe Bronsin 2499 m.

After taking the path at the start of the Gelon bridge which leads to the summits, continue to the right towards the Pissus refuge. Go up the valley of the Villard stream. Once at the 1965m point, follow the contour line to the left until you reach the 1970m point.

Turning right, the path now follows a variant of the Pissus loop. Turn right and go down the slope to the Lac du Loup (1925m) while respecting the possible presence of the Tarines cows so as not to turn their milk which could turn into Beaufort faster than expected!

Then follow the bottom of the watershed and, once you reach the path, turn left to the Chalet de la Cave. The path continues to the right and follows the Haut Gentil stream before branching off to the left and joining the Gelon bridge by a gentle descent.

# On your path...



# All useful information

## How to come ?

### Access

From Albertville, RN90 (exit 36), D990 (through Feissons-sur-Isère) then left on D66 (towards Pussy/Bonneval/Celliers). Turn right onto D213 and continue on the mountain road. Cross the village of Bonneval and continue to the car park of Gelon.

From Moûtiers, RN90 (exit 36), turn left onto D990 then left again onto D66 (towards Pussy/Bonneval/Celliers). Turn right onto D213 and continue on the mountain road. Cross the village of Bonneval and continue to the car park of Gelon.

### Advised parking

Gelon car park