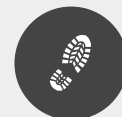




# Loop of Quermoz (B9)

Tarentaise - LA LECHERE

(CCVA)



*Loop through forests and pastures until views of the northern Alps open up*

## Useful information

---

Practice : Walking hike

---

Duration : 7 h

---

Length : 15.0 km

---

Trek ascent : 1051 m

---

Difficulty : Challenging

---

Type : Loop

---

Themes : Flora , Pastoralism ,  
Viewpoint

---

Accessibility : Chien autorisé

# Trek

**Departure** : Grand Nâves

**Arrival** : Grand Nâves

**Markings** : — PR

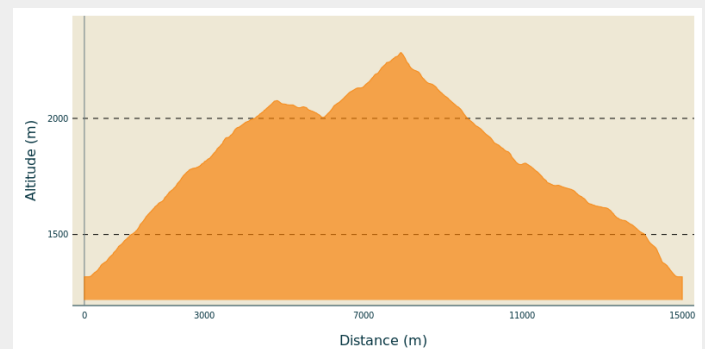
**Cities** : 1. LA LECHERE

2. AIME-LA-PLAGNE

3. AIGUEBLANCHE

4. HAUTECOUR

## Altimetric profile



Min elevation 1318 m Max elevation 2284 m

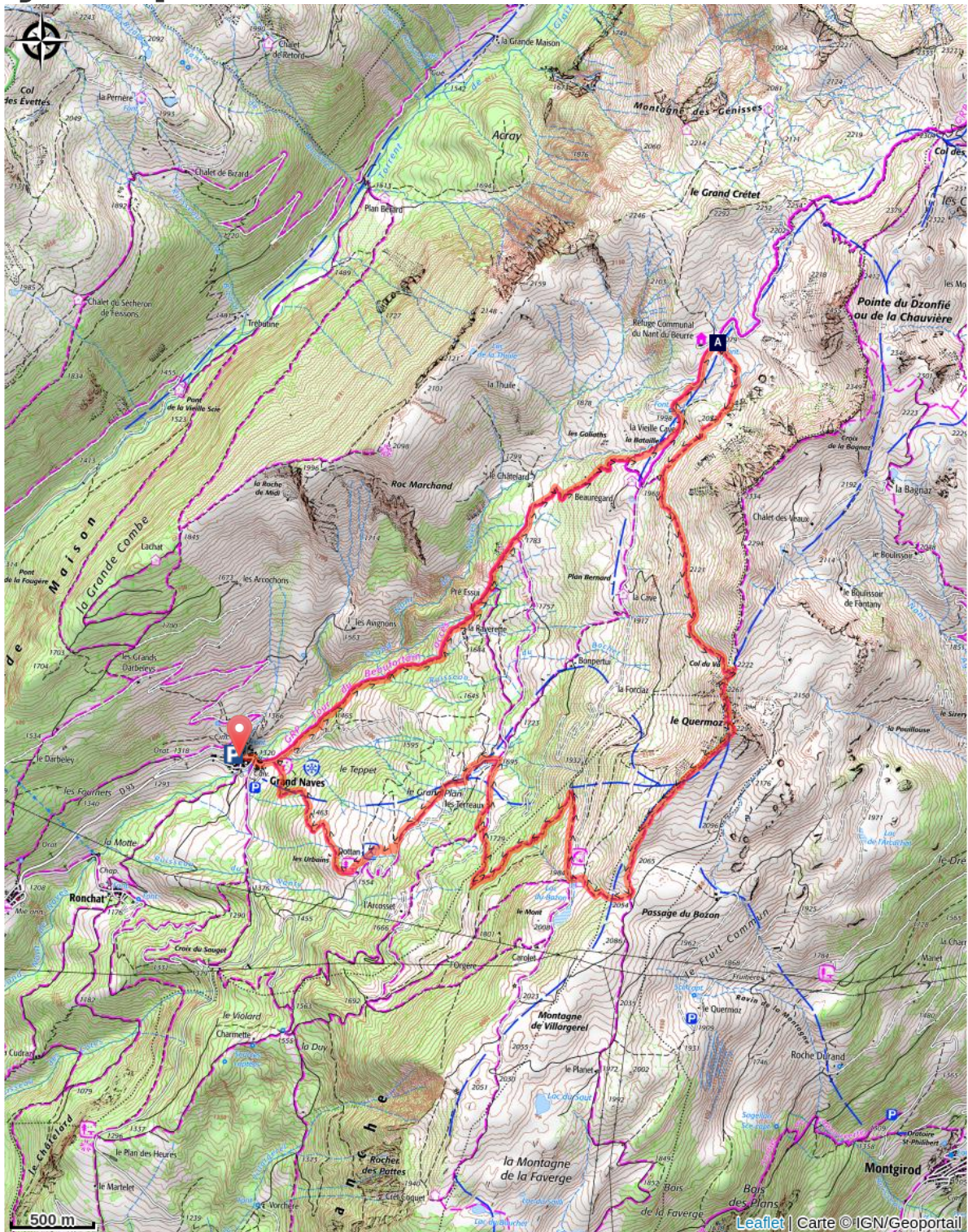
Starting from the traditional high altitude village, Grand Nâves (1 320 m), the hike goes up through the forest, through some clearings, until arriving at la Raverette (1 700m). Follow the alpine pasture road until the Châtelard Mountain (1 780 m). The high Nâves Valley then opens up. Keep going uphill until the Vieille Cave (Old Cellar – 1 998 m), via the Beauregard Plateau. During summer, the Tarine cows can be seen grazing. Take a right hand turn until the Nant du Beurre refuge (2 079 m) which has a view over the Cheval Noir (Black Horse), Valmorel, the Madeleine Col and the Lauzière Massif. Food and beds are available.

Keep on until reaching the Vâ Col (2 222 m) and then the Quermoz (2 297 m), highest point of the hike. From this peak, the northern Alps with the Mont-Blanc, the Beaufortain and the Vanoise are visible.

On the way down, the path goes down a flowery valley, around the Bozon lake (1 990 m) and down a forest a path. Reach the Terreaux du Haut (1 720 m) and then the Tovet (1 554 m), starting gate of the Nordic skiing trails. A final downhill slope returns to the Grand Nâves village.



# On your path...



 Nant du Beurre Refuge (A)



# All useful information

## **Advices**

Unadvised for beginners because of its length and steep inclines.

Many sections are through alpine pastures and exposed paths: necessary sun protection is strongly advised.

## **How to come ?**

### Access

From Albertville, follow N90, take exit 37 towards La Léchère and continue on D990. At the Carbone Savoie factory take a left on rue de la Digarde. Go through Petit Cœur and continue on D93 to Nâves.

From Moutiers, follow N90 and take exit 37 towards Petit Cœur. Go through the hamlet and continue on D93 to Nâves.

## **Accessibility**

---



Chien autorisé

## **Information desks**

### **Office de Tourisme de Valmorel et des Vallées d'Aigueblanche**

Bourg Morel, 73260 Valmorel

[info@valmorel.com](mailto:info@valmorel.com)

Tel : 04 79 09 85 55

<https://www.valmorel.com>

# On your path...

---



## Nant du Beurre Refuge (A)

This refuge is staffed and serves refreshments, so treat yourself to a break on arrival! The stunning view from outside takes in La Lauzière, Le Cheval Noir and the Vanoise peaks with, in the background, La Meige and Les Ecrins mountain range. Marmots are commonly sighted around here and, if you're lucky, you might even spot a Golden Eagle!

Attribution : 3LBI