

Loop of Feissons (B5)



A half-day family walk through the forest offering a great view of the Valley of the Grand House

Useful information

Practice : Walking hike

Duration : 4 h

Length : 8.6 km

Trek ascent : 702 m

Difficulty : Difficult

Type : Loop

Themes : Fauna , Pastoralism ,
Viewpoint

Accessibility : Chien autorisé

Trek

Departure : Feissons-sur-Isère, Castle

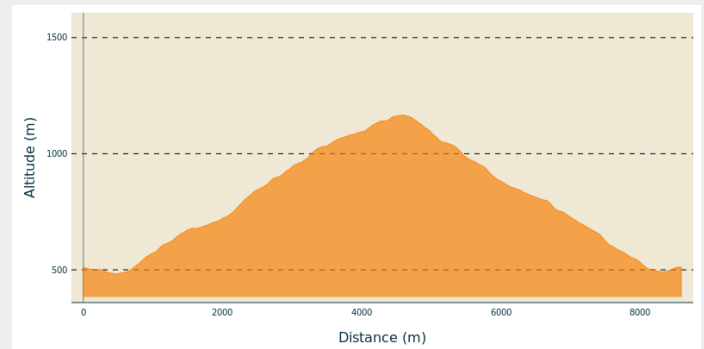
Arrival : Feissons-sur-Isère, Castle

Markings : — PR

Cities : 1. FEISSONS-SUR-ISERE

2. LA LECHERE

Altimetric profile



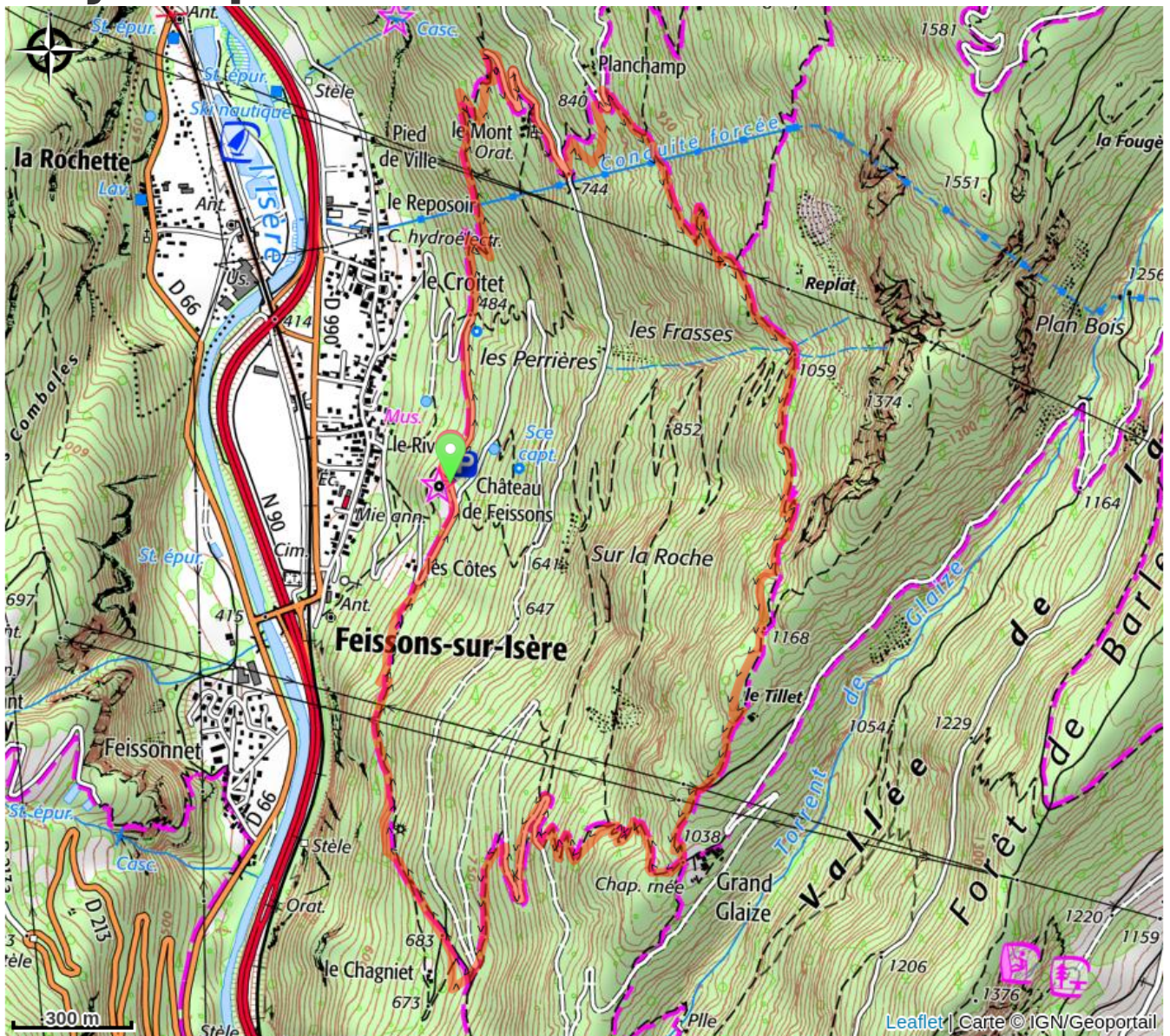
Min elevation 483 m Max elevation 1166 m

Starting from the Feissons-sur-Isère castle, follow the downhill road until you reach the forest path of “Las Côtes”. An engraved rock on the side of the path marks the passage of the Austrian empire on the 22nd June 1815.

The shaded path continues towards the hamlet of “Grand Glaize” (1040m) where a lookout area offers a view of the “Grand House” valley. Keep straight along the large track until you find the “Tillet” cabin (1140m). The loop then delves back into the forest until “Sur le Tillet” (1168m). Take a left turn then and go towards the hamlet of “Le Mont” (70m) by passing through “Planchamp” (840m).

You’ll pass under a large pipeline where there is a clear view of the Lauzière Massif. Keep straight through the next two hamlets, along the forest path and along the road for a few meters before arriving back to the castle.

On your path...



All useful information

Advices

Ideal on a hot day.
The track may be slippery on a wet day.
Not recommended for beginners due to its steep inclines.

How to come ?

Transports

Envie de randonner en Vanoise sans prendre la voiture ? C'est simple !

Les vallées de Tarentaise et de Maurienne sont facilement **accessibles en train**, grâce à plusieurs gares situées au cœur du territoire.

Sur place, **des lignes de bus régulières** vous emmènent jusqu'aux villages et stations, portes d'entrée idéales pour partir à la découverte des sentiers du Parc national de la Vanoise et des réserves naturelles nationales gérées par le Parc.

Choisir les transports en commun, c'est commencer l'aventure tout en préservant ce territoire d'exception. Retrouvez toutes les infos pratiques sur vanoise-parcnational.fr

Pour préparer votre trajet, utilisez le **calculateur d'itinéraires Oûra** ci-dessous.

Access

From Moutiers: follow N90 towards D990 to Feissons-sur-Isère. Take exit 36 and go through Feissons-sur-Isère. After having gone past the town hall on your left ("la mairie"), take a right turn and go straight ahead to the castle.

From Albertville: follow N90 towards D990 to Feissons-sur-Isère. Take exit 36 and continue on the D990 on your right hand side. Take the first road on your left and enter the village. At the end of the road take a left and, at the next intersection, take the road on your right and go straight ahead to the castle.

Advised parking

Feissons-sur-Isère, castle

Accessibility



Chien autorisé

i Information desks

Office de Tourisme de Valmorel et des Vallées d'Aigueblanche

Bourg Morel, 73260 Valmorel

info@valmorel.com

Tel : 04 79 09 85 55

<https://www.valmorel.com>

Office de Tourisme La Léchère-les-Bains

Immeuble les Eaux Claires, 73260 La Léchère-les-Bains

lalecherelesbains@valmorel.com

Tel : 04 79 22 51 60

<https://lalecherelesbains.valmorel.com>