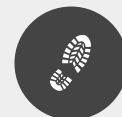




# Loop of Feissons (B5)

Beaufortain - FEISSONS-SUR-ISERE



*A half-day family walk through the forest offering a great view of the Valley of the Grand House*

## Useful information

---

Practice : Walking hike

---

Duration : 4 h

---

Length : 8.6 km

---

Trek ascent : 702 m

---

Difficulty : Difficult

---

Type : Loop

---

Themes : Fauna , Pastoralism ,  
Viewpoint

---

Accessibility : Chien autorisé



# Trek

**Departure** : Feissons-sur-Isère, Castle

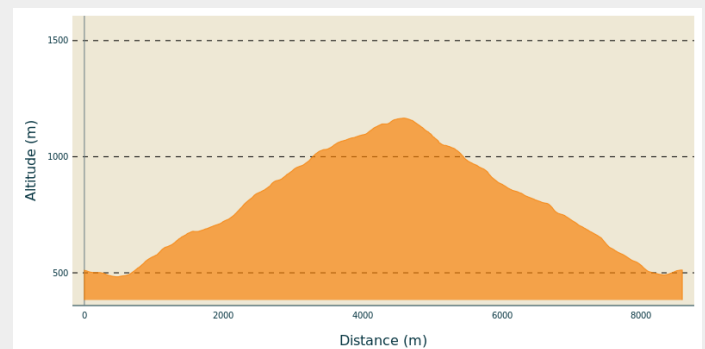
**Arrival** : Feissons-sur-Isère, Castle

**Markings** :  PR

**Cities** : 1. FEISSONS-SUR-ISERE

2. LA LECHERE

## Altimetric profile



Min elevation 483 m Max elevation 1166 m

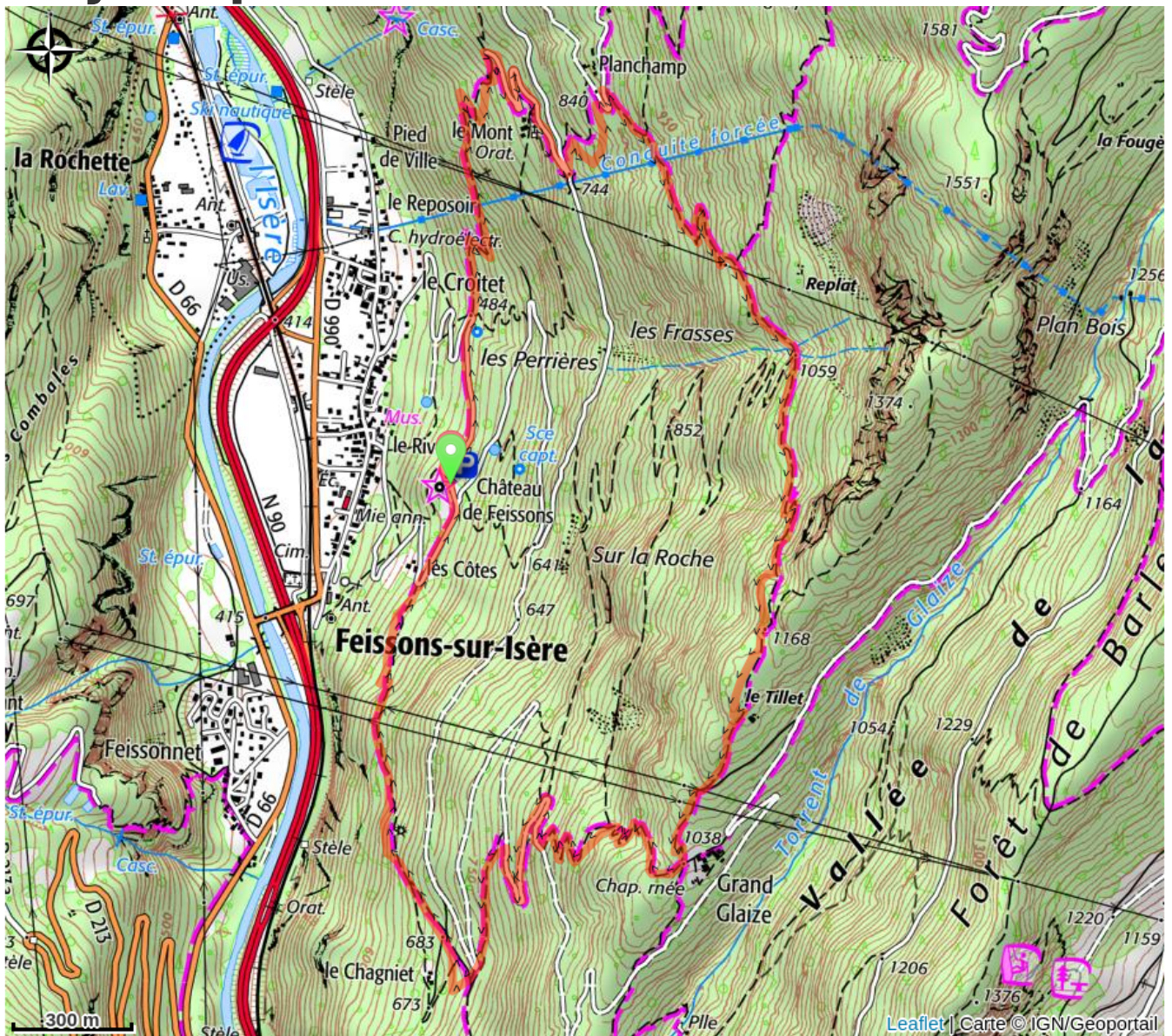
Starting from the Feissons-sur-Isère castle, follow the downhill road until you reach the forest path of “Las Côtes”. An engraved rock on the side of the path marks the passage of the Austrian empire on the 22nd June 1815.

The shaded path continues towards the hamlet of “Grand Glaize” (1040m) where a lookout area offers a view of the “Grand House” valley. Keep straight along the large track until you find the “Tillet” cabin (1140m). The loop then delves back into the forest until “Sur le Tillet” (1168m). Take a left turn then and go towards the hamlet of “Le Mont” (70m) by passing through “Planchamp” (840m).

You’ll pass under a large pipeline where there is a clear view of the Lauzière Massif. Keep straight through the next two hamlets, along the forest path and along the road for a few meters before arriving back to the castle.



# On your path...





# All useful information

## **Advices**

Ideal on a hot day.

The track may be slippery on a wet day.

Not recommended for beginners due to its steep inclines.

## **How to come ?**

### Access

From Moutiers: follow N90 towards D990 to Feissons-sur-Isère. Take exit 36 and go through Feissons-sur-Isère. After having gone past the town hall on your left (*"la mairie"*), take a right turn and go straight ahead to the castle.

From Albertville: follow N90 towards D990 to Feissons-sur-Isère. Take exit 36 and continue on the D990 on your right hand side. Take the first road on your left and enter the village. At the end of the road take a left and, at the next intersection, take the road on your right and go straight ahead to the castle.

### Advised parking

Feissons-sur-Isère, castle

## **Accessibility**

---



Chien autorisé



## **Information desks**

### **Office de Tourisme La Léchère-les-Bains**

Immeuble les Eaux Claires, 73260 La Léchère-les-Bains

[lalecherelesbains@valmorel.com](mailto:lalecherelesbains@valmorel.com)

Tel : 04 79 22 51 60

<https://lalecherelesbains.valmorel.com>

### **Office de Tourisme de Valmorel et des Vallées d'Aigueblanche**

Bourg Morel, 73260 Valmorel

[info@valmorel.com](mailto:info@valmorel.com)

Tel : 04 79 09 85 55

<https://www.valmorel.com>