



# Trail of Quermoz

Beaufortain - LA LECHERE

(ccva)



*Up to the Quermoz Peak which offers a view of the Nâves cirque and the glaciers, mountain ranges and valleys of the region*

## Useful information

---

Practice : Trail

---

Duration : 2 h

---

Length : 14.8 km

---

Trek ascent : 1051 m

---

Difficulty : Difficult

---

Type : Loop

---

Accessibility : Chien autorisé

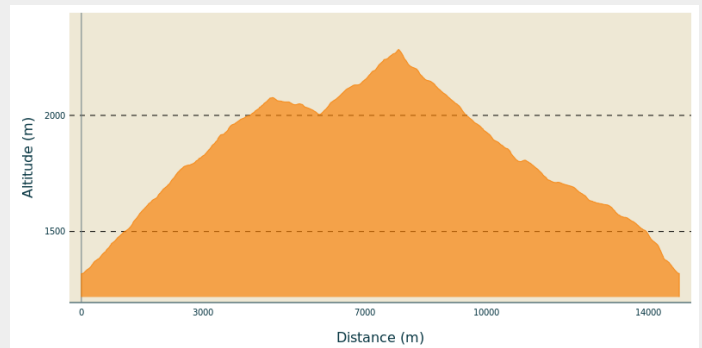
# Trek

**Departure** : Nâves

**Arrival** : Nâves

**Cities** : 1. LA LECHERE  
2. AIME-LA-PLAGNE  
3. AIGUEBLANCHE  
4. HAUTECOUR

## Altimetric profile



Min elevation 1318 m Max elevation 2284 m

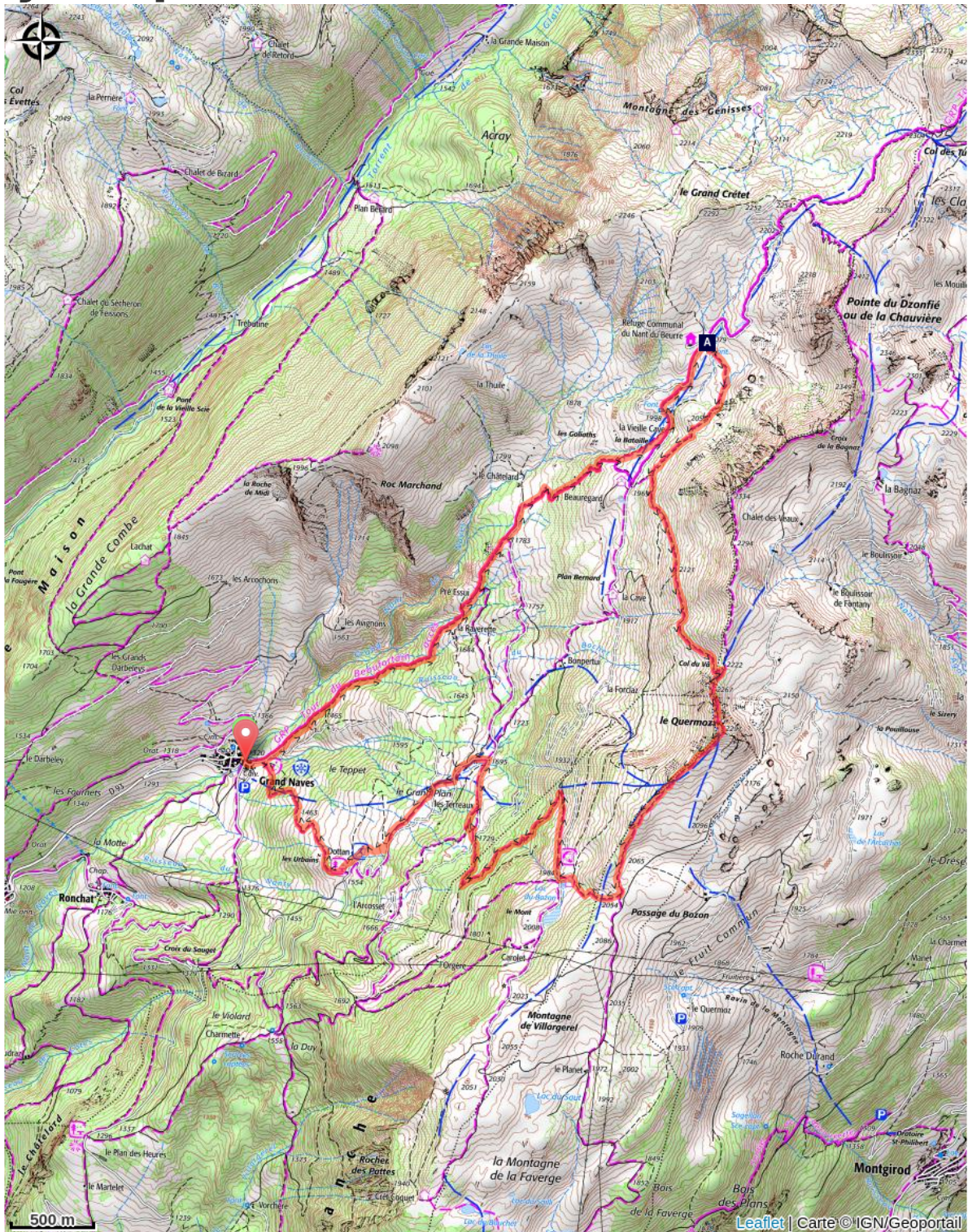
After the Grand-Nâves bridge, take a left turn. The trail begins 100m further on.

Follows the Grand-Nant de Nâves stream uphill. This section is steep: 760m “positive” in the first 5.5km, through the forest which leads to the Pré Essuie refuge. The trail then follows the Nordic skiing slopes until the Nant du Beurre refuge where you can have a drink on the terrace.

Take a right and follow the balcony path up to the Col du Vâ (2222m). Run along the mountainside which offers a view of the High-Tarentaise until the Quermoz summit (2297m). A great landscape awaits at the top: the Vanoise glaciers, the Beaufortain mountain massif, the “Eaux-Rousses” and Morel Valleys opposite...

Follow the ridge until going back down at the Bozon Lake (1990m). A small forest track leads to the Tovet chalet, gateway to the Nordic skiing domain in winter. A final steep section will bring you back down to Nâves.

# On your path...



 Nant du Beurre Refuge (A)

# All useful information

## How to come ?

### Access

From Albertville, follow N90, take exit 37 towards La Léchère and continue on D990. At the Carbone Savoie factory, take a left on rue de la Digarde. Go through Petit Cœur and continue on D93 up to Nâves.

From Moutiers, follow N90 and take exit 37 towards Petit Cœur. Go through the hamlet and continue on D93 up to Nâves.

### Advised parking

Nâves, Mountain House

## Accessibility

---



Chien autorisé

# On your path...

---



## Nant du Beurre Refuge (A)

This refuge is staffed and serves refreshments, so treat yourself to a break on arrival! The stunning view from outside takes in La Lauzière, Le Cheval Noir and the Vanoise peaks with, in the background, La Meige and Les Ecrins mountain range. Marmots are commonly sighted around here and, if you're lucky, you might even spot a Golden Eagle!

Attribution : 3LBI