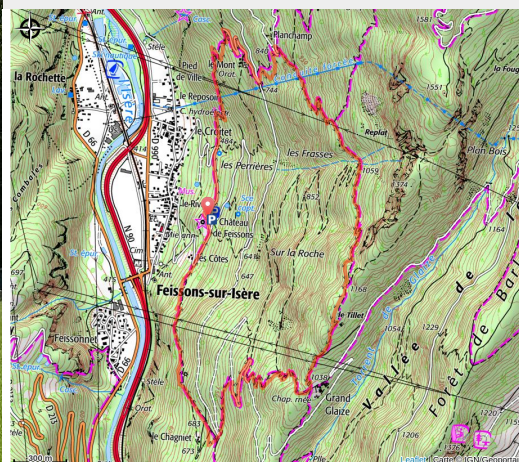


# Trail of the Forêt de Feissons

Beaufortain - FEISSONS-SUR-ISERE



(ccva)



*Discover the Feissons-sur-Isère forest, village and castle.*

Make the most of the beautiful forest on the way down and take a sneaky peak of the hamlets on the opposing mountain range. You can also see the Arc Col and the Bellachat Mount, an emblematic summit of the Lauzière Massif.

## Useful information

Practice : Trail

Duration : 1 h

Length : 8.6 km

Trek ascent : 702 m

Difficulty : Difficult

Type : Loop

Themes : Architecture, Flora ,  
Viewpoint

# Trek

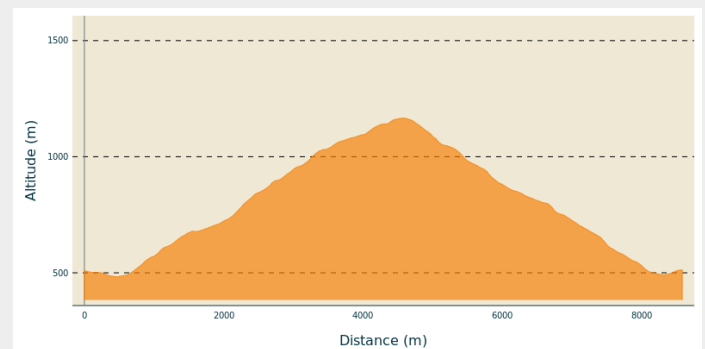
**Departure** : Feissons castle

**Arrival** : Feissons castle

**Markings** :  PR

**Cities** : 1. FEISSONS-SUR-ISERE  
2. LA LECHERE

## Altimetric profile



Min elevation 483 m Max elevation 1166 m

At the castle, take the main road for 300m then follow the path into the woods («Les Côtes» 510m). As the incline gets steeper, take a left hand turn after 1.5km, towards Grand Glaize. The forest gets denser and massive rock formations emerge as you get closer to Grand-Glaize (1040m).

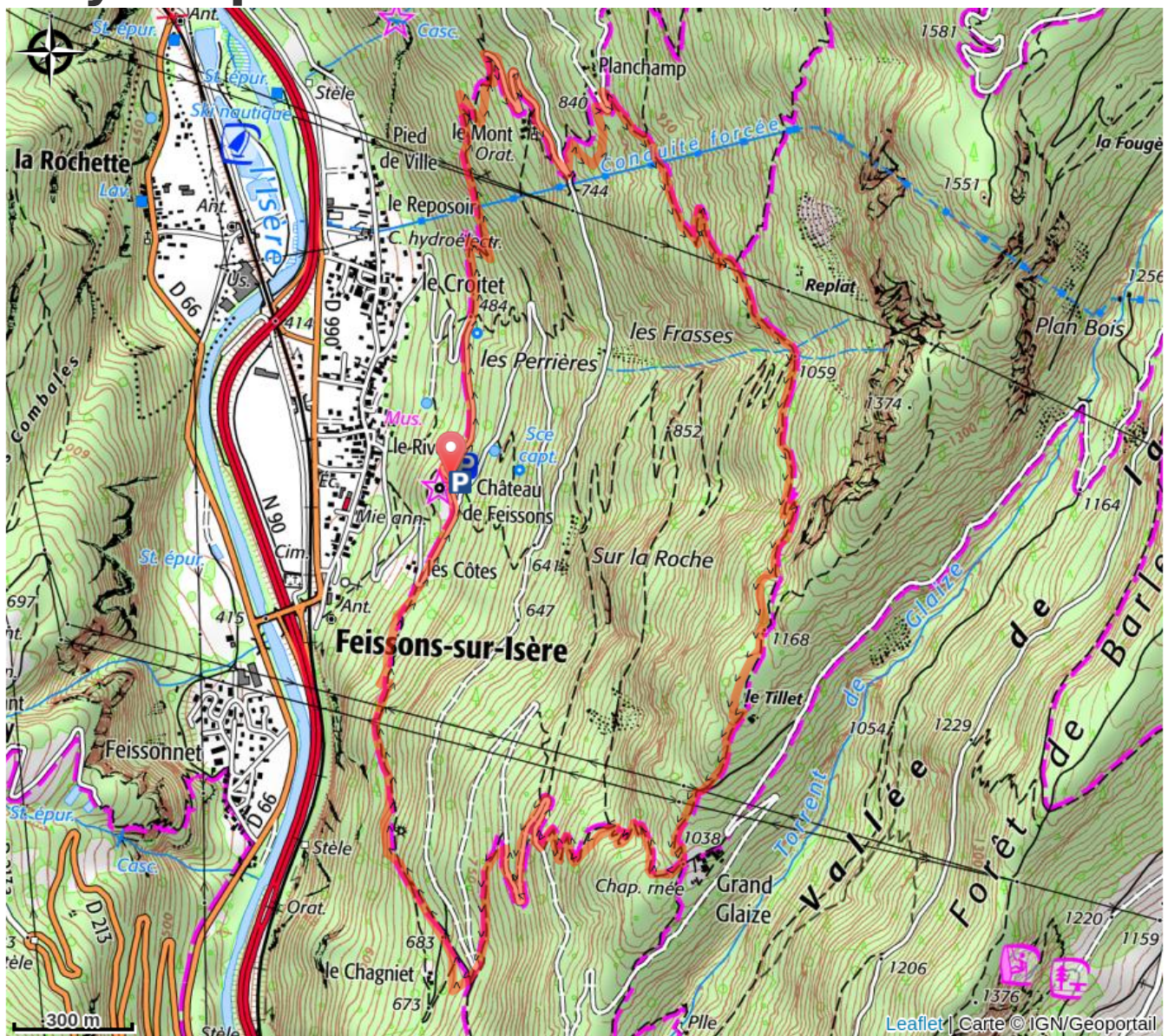
The last few uphill meters are after a left-hand turn towards the Tillet (1140m) until reaching the highest point (1168m), 4.2km into the run.

Continue down the hill and go through the stone houses of Planchang and then the localities of “du Mont” and “Chez Gardet” (650m).

The final stretch reaches the “Perrières” (484m) and re-joins the castle after 500m on the main road.



# On your path...



# All useful information

## How to come ?

### Access

From Moutiers, follow N90 towards D990 to Feissons-sur-Isère. Take exit 36 and leave N90. Go through the Feissons-sur-Isère village. After the town hall (on your left), take the first road on your right and continue up to the castle.

From Albertville, the D990 towards Feissons-sur-Isère. Take exit 36 and continue on D990 which is on your right. Take the first road to your left and enter the village. At the end of the road, take a left and, at the next intersection, take a right and continue up to the castle.

### Advised parking

Feissons-sur-Isère, castle