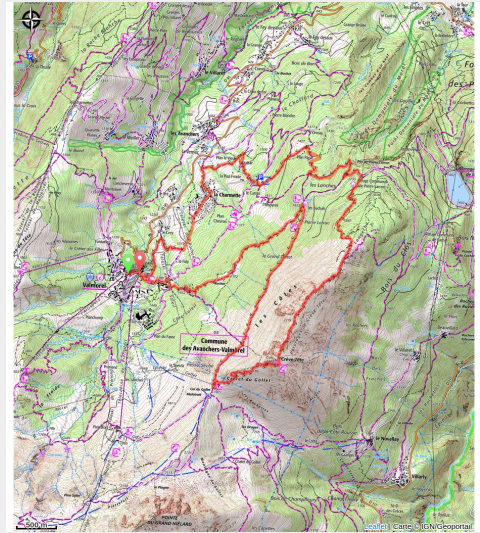


Trail of Crève-Tête

Vanoise - LES AVANCHERS-VALMOREL



(ccva)



Circuit the Valmorel sector and reach the Crève-Tête (2342m) summit

Useful information

Practice : Trail

Duration : 1 h 48

Length : 17.9 km

Trek ascent : 1343 m

Difficulty : Difficult

Type : Loop

Themes : Flora , Summit ,
Viewpoint

Trek

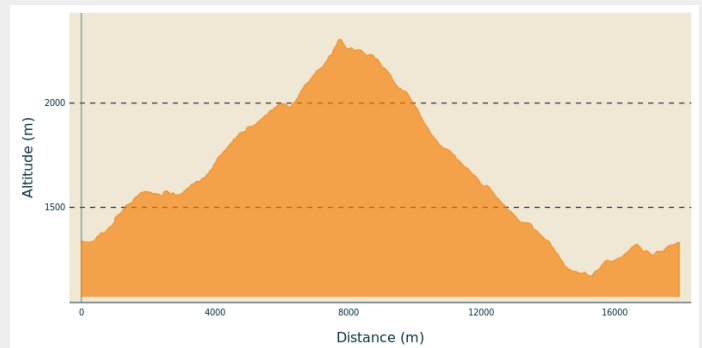
Departure : Valmorel ski resort, beach volley-ball pitch

Arrival : Valmorel ski resort, beach volley-ball pitch

Markings : ■ PR

Cities : 1. LES AVANCHERS-VALMOREL
2. SAINT-JEAN-DE-BELLEVILLE

Altimetric profile



Min elevation 1170 m Max elevation 2307 m

Starting from the Beach volley-ball pitch, take a first, quite steep, path up through agricultural lands, forests and alpine pasture lands.

After the first 3.4kms, arrive at the Bachals chalet (1620m) onto a gravel road for a few hundred meters. Then begins the uphill trail which will take you to the Col du Gollet (1980m) through the “hunter’s” path.

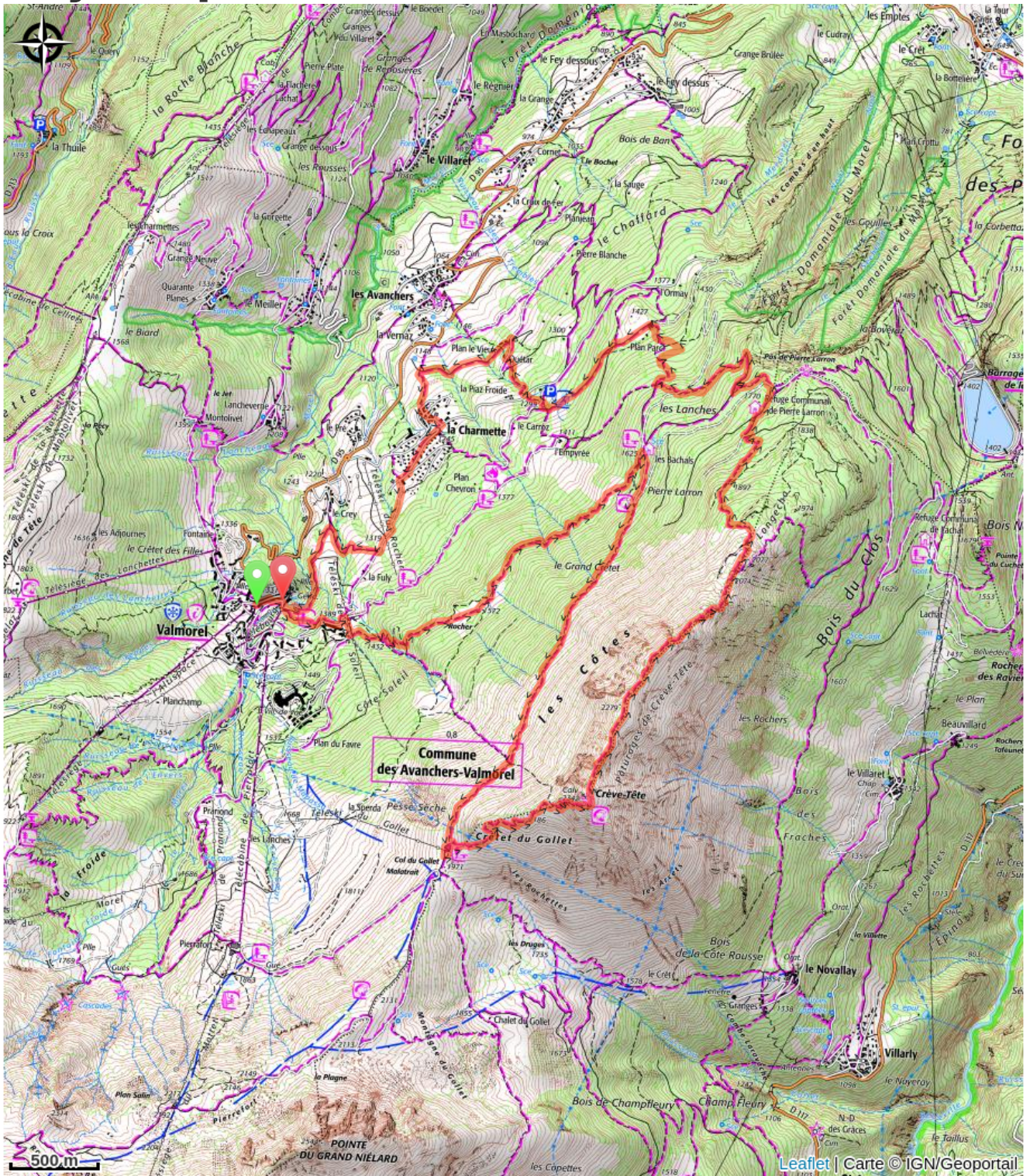
Reach Crève-Tête (2384m) (literally “Punctured-head”) after a challenging 1.7 km and 360 m+ incline.

The fantastic 360° view is one of the most sought-after spots of the area: the Lozière Massif and the Morel Valley on one side, the Belleville Valley and the Vanoise glaciers behind and, to the east, the Nâves Valley and the Mont-Blanc.

After a break at the top, start back off with running along the ridge between the Morel Valley and the Belleville Valley.

The way down goes through a technical woodland path. After going past the Pierre Larron chalet and taking a right turn at the 4 Chemins (4 paths), descend to the Charmettes hamlet (1220m), lowest point of the trail. Join back up with Valmorel 3km further on.

On your path...



All useful information

How to come ?

Access

From Albertville, RN90 (exit 37), RD97 (through La Léchère), then RD97A (through Bellecombe) then RD95 until Valmorel.

From Moûtiers, RN90 (exit 38), RD92 (through Aigueblanche), then RD94 until the round-about and RD95 until Valmorel.

Advised parking

Valmorel ski resort