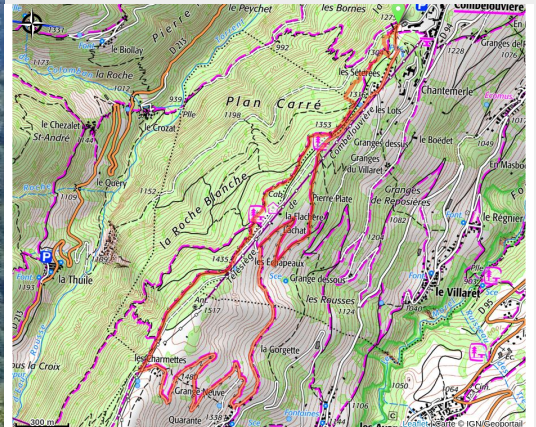


Trail of the "Centre de la Savoie"

Vanoise - LA LECHERE



(ccva)



Discovery of the Doucy area and the centre of Savoie.

Useful information

Practice : Trail

Duration : 1 h

Length : 8.4 km

Trek ascent : 393 m

Difficulty : Easy

Type : Loop

Themes : Architecture, Flora ,
Viewpoint

Trek

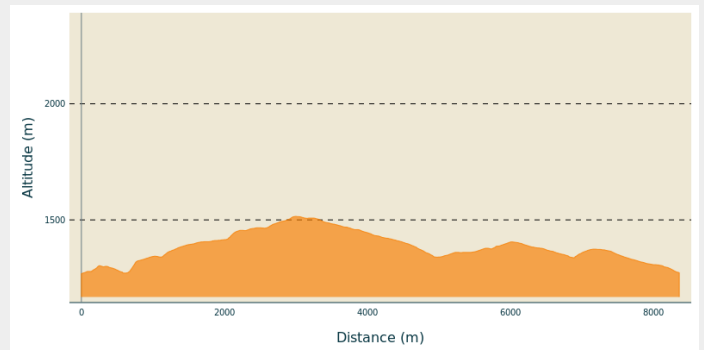
Departure : Doucy ski resort, top car park

Arrival : Doucy ski resort, top car park

Markings : ■ PR

Cities : 1. LA LECHERE
2. LES AVANCHERS-VALMOREL

Altimetric profile



Min elevation 1268 m Max elevation 1515 m

The starting point is just west of the highest car park in Doucy ski resort (1280m).

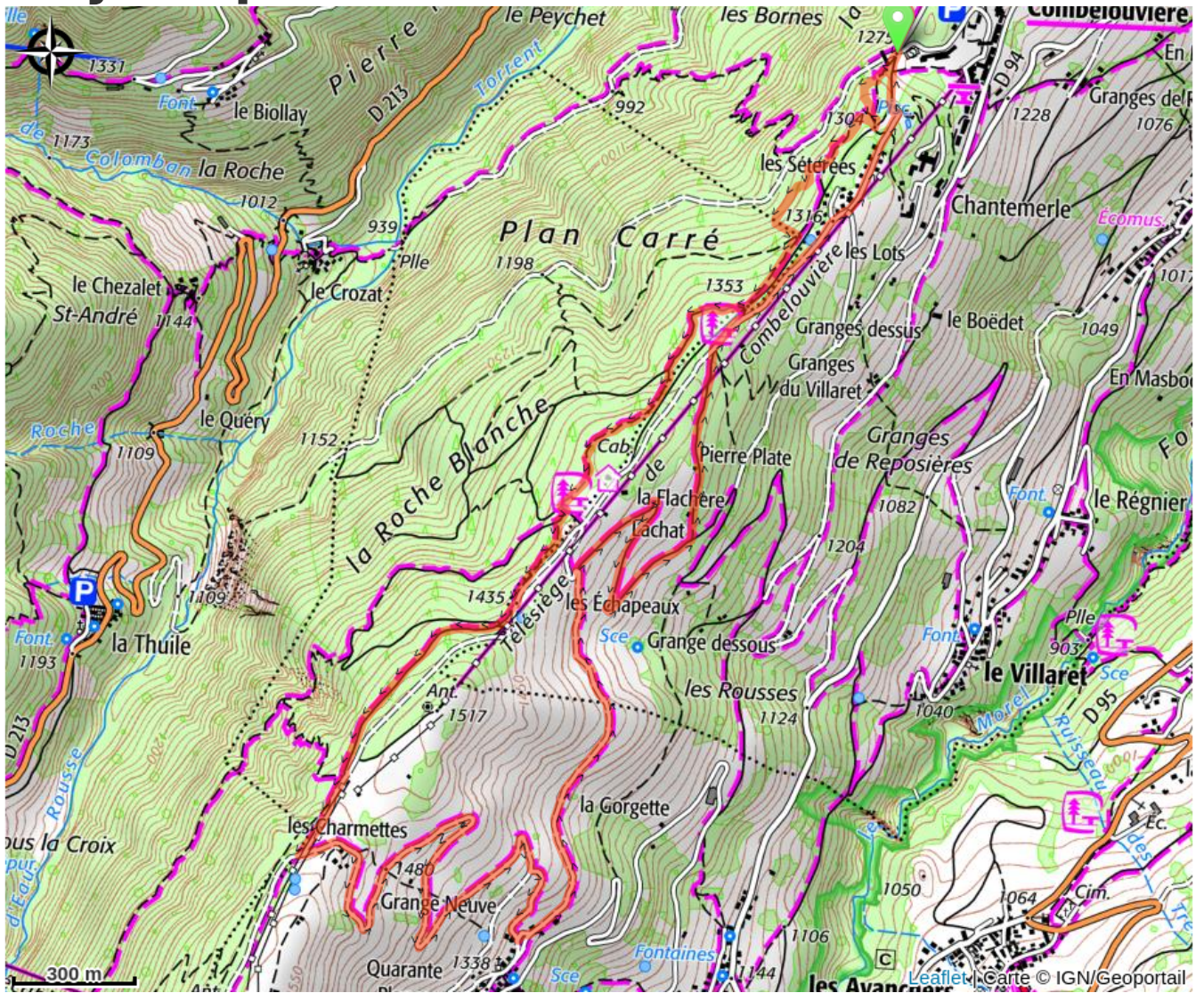
Follow up the ski slope which leads to Doucy resort by taking the forest track. Make sure to warm up as the trail begins with a steep hill.

Follow the path for about 300 m in the forest which offers cool coverage. Then, take the ski slope uphill for around 1km before taking a left turn down towards the hamlet of Quarantes Planes, the “centre of the Savoie” region.

The downhill path to the “centre of the Savoie” is a nice 1.8km with a great view of the summits of the Valmorel cirque (Crève-Tête, Niélard point, the Cheval Noir). As you leave the hamlet, climb 120m uphill.

When the “Lachat” (1340m) sign is reached 2km further on, take a short steep path for 250m to reach the final descent back to Doucy resort.

On your path...



All useful information

Advices

Parts of this trail follow the same tracks as the “EDF Trail des Vallées d’Aigueblanche (ETVA)”, race which takes place every second weekend of October.

How to come ?

Access

From Albertville, RN90 (exit 37), RD97 (through La Léchère), then RD94 to Doucy ski resort.

From Moûtiers, RN90 (exit 38), RD92 (through Aigueblanche), then RD94 to Doucy ski resort.

Advised parking

Doucy ski resort, top car park