



# Trail of Nant du Beurre

Beaufortain - LA LECHERE

(ccva)



*A great discovery trail for beginners or a fractioned track for the experienced*

This trail is made for you if you're a trail beginner or experienced looking for a high altitude loop to practice fractioned runs.

## Useful information

---

Practice : Trail

---

Duration : 30 min

---

Length : 2.7 km

---

Trek ascent : 137 m

---

Difficulty : Very easy

---

Type : Loop

---

Themes : Flora , Refuge,  
Viewpoint

---

Accessibility : Chien autorisé

# Trek

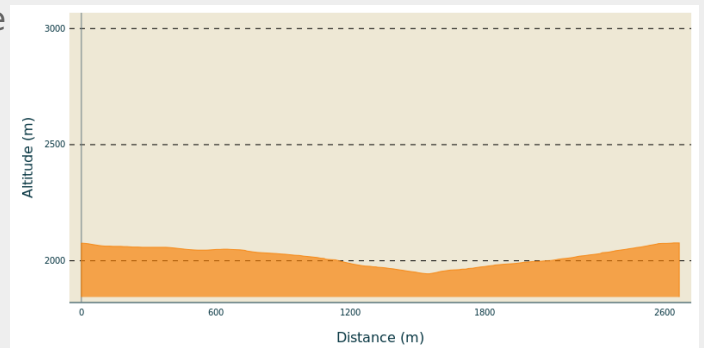
**Departure** : Refuge of the Nant du Beurre

**Arrival** : Refuge of the Nant du Beurre

**Markings** :  PR

**Cities** : 1. LA LECHERE

## Altimetric profile

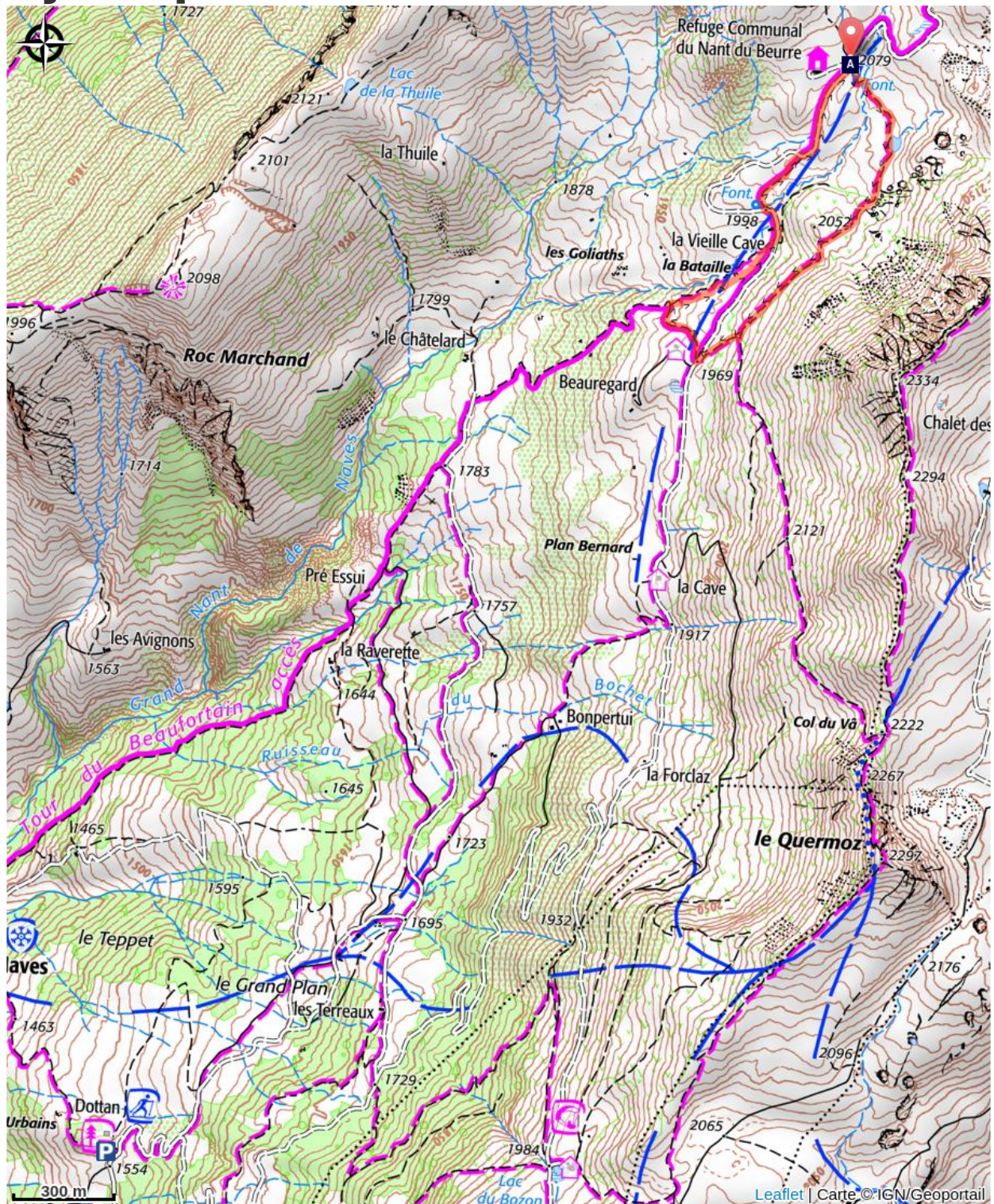


Min elevation 1944 m Max elevation 2077 m

Starting from the Nant du Beurre refuge (2080m), take a first 100m- and 1.3km long downhill stretch. The path follows down the middle of the valley then loops back up to the starting point at the Nant du Beurre refuge.



# On your path...



 Nant du Beurre Refuge (A)



# All useful information

## **Advices**

You may also make the most of the Nâves Valley and stay for a weekend at the Nant du Beurre refuge (where the stars are supposedly the most beautiful of the Savoie region...), and wake up early for a sunrise jog.

## **How to come ?**

### Access

From Albertville, follow N90, take exit 37 towards La Léchère and continue on D990. At the Carbone Savoie factory, turn left on rue de la Digarde. Cross Petit Coeur and continue on D93 direction Nâves. Cross Nâves and continue towards the Tovet car park.

From Moutiers, follow N90 and take exit 37 towards Petit Coeur. Cross the hamlet and continue on the D93 towards Nâves. Go through Nâves and continue towards the Tovet car park.

### Advised parking

Tovet car park

## **Accessibility**

---



Chien autorisé

# On your path...

---



## Nant du Beurre Refuge (A)

This refuge is staffed and serves refreshments, so treat yourself to a break on arrival! The stunning view from outside takes in La Lauzière, Le Cheval Noir and the Vanoise peaks with, in the background, La Meige and Les Ecrins mountain range. Marmots are commonly sighted around here and, if you're lucky, you might even spot a Golden Eagle!

Attribution : 3LBI