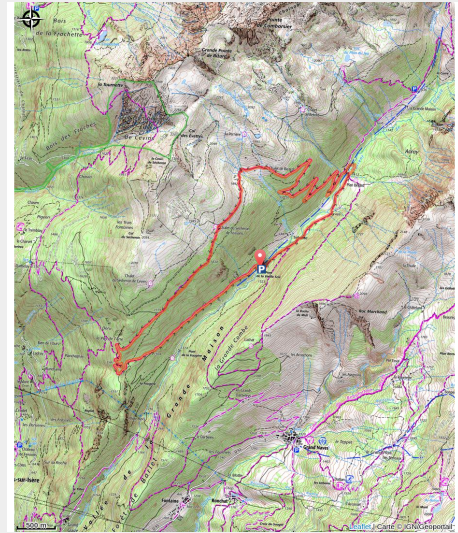


# The Big House (B8)

Beaufortain - LA LECHERE



Chiens de berger (ccva)



*Day hike through the pastures of the 'Big House Valley'.*

## Useful information

---

Practice : Walking hike

---

Duration : 5 h

---

Length : 13.4 km

---

Trek ascent : 523 m

---

Difficulty : Easy

---

Type : Loop

---

Themes : Flora , Pastoralism ,  
Refuge

# Trek

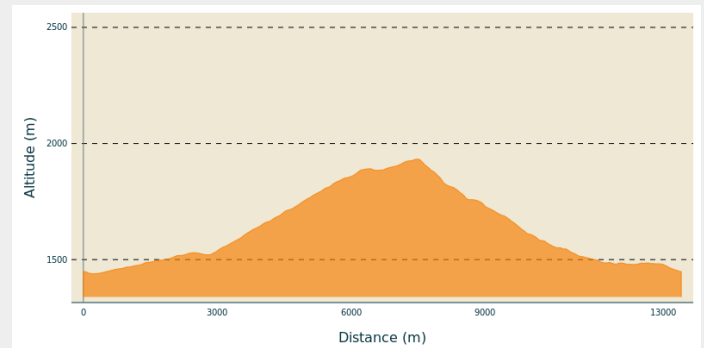
**Departure** : Valley of the Big House, Hut of the 'Pont de la Scie'

**Arrival** : Valley of the Big House, Hut of the 'Pont de la Scie'

**Markings** : ■ PR

**Cities** : 1. LA LECHERE  
2. FEISSONS-SUR-ISERE

## Altimetric profile

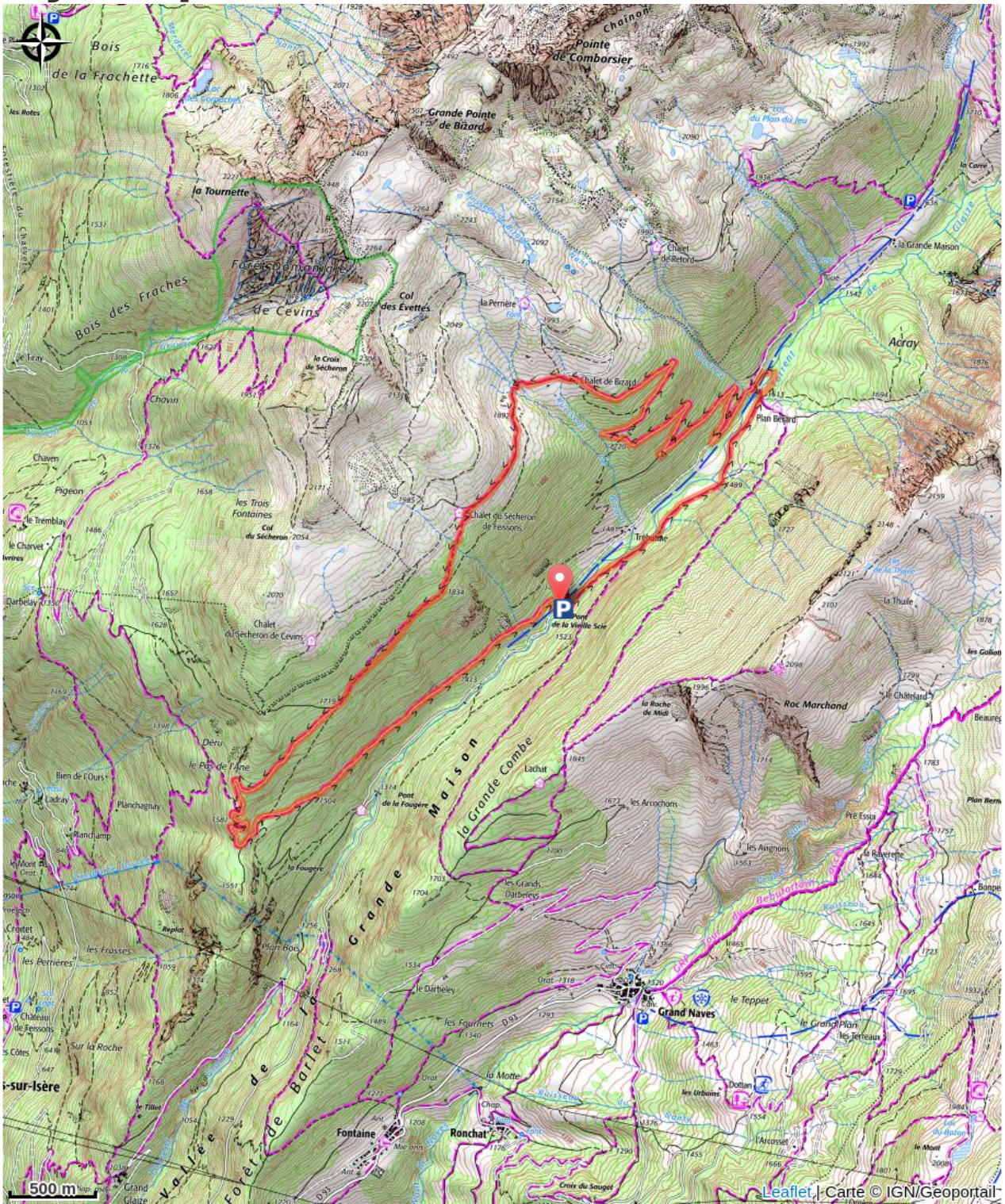


Min elevation 1439 m Max elevation 1933 m

Starting from the Pont de la Scie (1430 m), a large forest path takes you through clearings where, at the beginning of summer, the flocks of ewes are kept. The track then follows the Glaize River until 'Sous Plan Bérard' (1510 m). Beware, the path in this area can be flooded when the river is swollen. A lodge is available once you've passed the river.

Cross the river thanks to the metallic bridge and walk up the hill to the Bizard chalet (1890m). Continue on the main road through the pastures of Feissons-sur-Isère until the Sécheron de Feissons chalet (1930 m). Walk through the moorland which turns a flamboyant red in autumn, towards the Pas de l'Ane (1600 m). Keep going on the main forest road until La Fougère (1504 m), before looping back up with the Pont de la Scie.

# On your path...



# All useful information

## **Advices**

This loop can be done by trained walkers as well as active families, but is not recommended for beginners or those who do not have a minimum requirement.

Beware of doing this hike on a hot day, many portions are exposed to the sun.

## **How to come ?**

### Access

From Moutiers, take the N90 towards Albertville. Take exit 37 and go through Petit Coeur towards Naves. After Molençon village, keep going on the D93 for approximately 1,5km. At the fourth bend, take a left and continue until arriving at the 'Pont de la Scie' bridge.

From Albertville, follow N90 towards Aigueblanche. Take exit 37 towards La Léchère and take the D990. Just after the Carbone Savoie factory on your right, take a left toward the D93. Go through Petit Coeur towards Naves. After Molençon village, keep going on the D93 for approximately 1,5km. At the fourth bend, take a left and continue until arriving at the 'Pont de la Scie' bridge.

### Advised parking

Valley of the Big House, Hut of the 'Pont de la Scie'

## **Information desks**

### **Office de Tourisme de Valmorel et des Vallées d'Aigueblanche**

Bourg Morel, 73260 Valmorel

info@valmorel.com

Tel : 04 79 09 85 55

<https://www.valmorel.com>