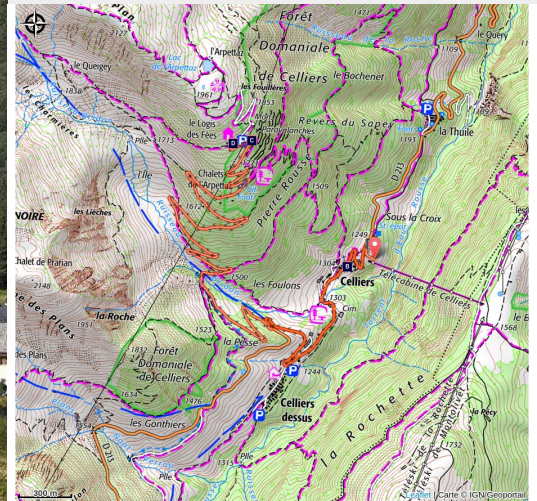


# The Electricity Fairies

Tarentaise - LA LECHERE



Point de vue sur le village de Celliers (CCVA)



*An enjoyable route at altitude that showcases the full beauty of the mountainside: viewpoints, woodland, rushing streams and highland pastures.*

On this route, soak up the mountain atmosphere as you ride along the Col de la Madeleine road past conifer forests, rushing streams and sweeping highland pastures. Waymarking continues until the Logis des Fées, but feel free to carry on all the way to the Natura 2000 listed lake of L'Arpettaz. Please be respectful of this nature spot.

## Useful information

Practice : Mountain bike (electric)

Duration : 2 h

Length : 13.3 km

Trek ascent : 597 m

Difficulty : Easy

Type : Return

Themes : Architecture, Lake and glacier, Pastoralism , Refuge

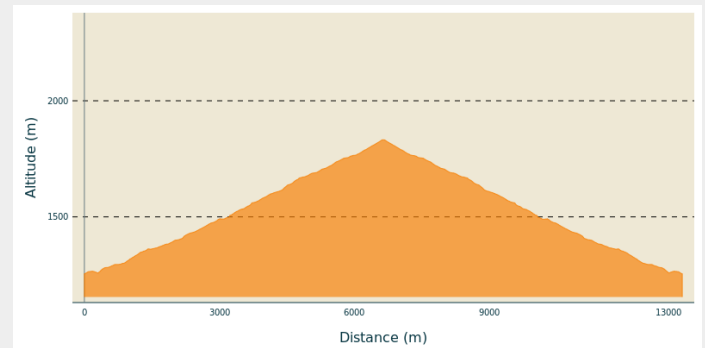
# Trek

**Departure** : Car park at the Celliers  
Gondola 73260 Celliers

**Arrival** : Car park at the Celliers Gondola  
73260 Celliers

**Cities** : 1. LA LECHERE

## Altimetric profile



Min elevation 1255 m Max elevation 1832 m

Set off from Celliers, following the Col de la Madeleine mountain pass road for 3km, before continuing along a mountain road past conifer forests, rushing streams and sweeping highland pastures. Take a break at the Logis des Fées refuge to prepare for the descent. If you're feeling adventurous, why not carry on as far as Lake Arpettaz via a round route (note that it is not waymarked). Please be respectful of this Natura 2000 listed site.

Follow the blue waymarks: Les Fées.

E-bike rental shops;

### **Choucas Sport (Skiset)**

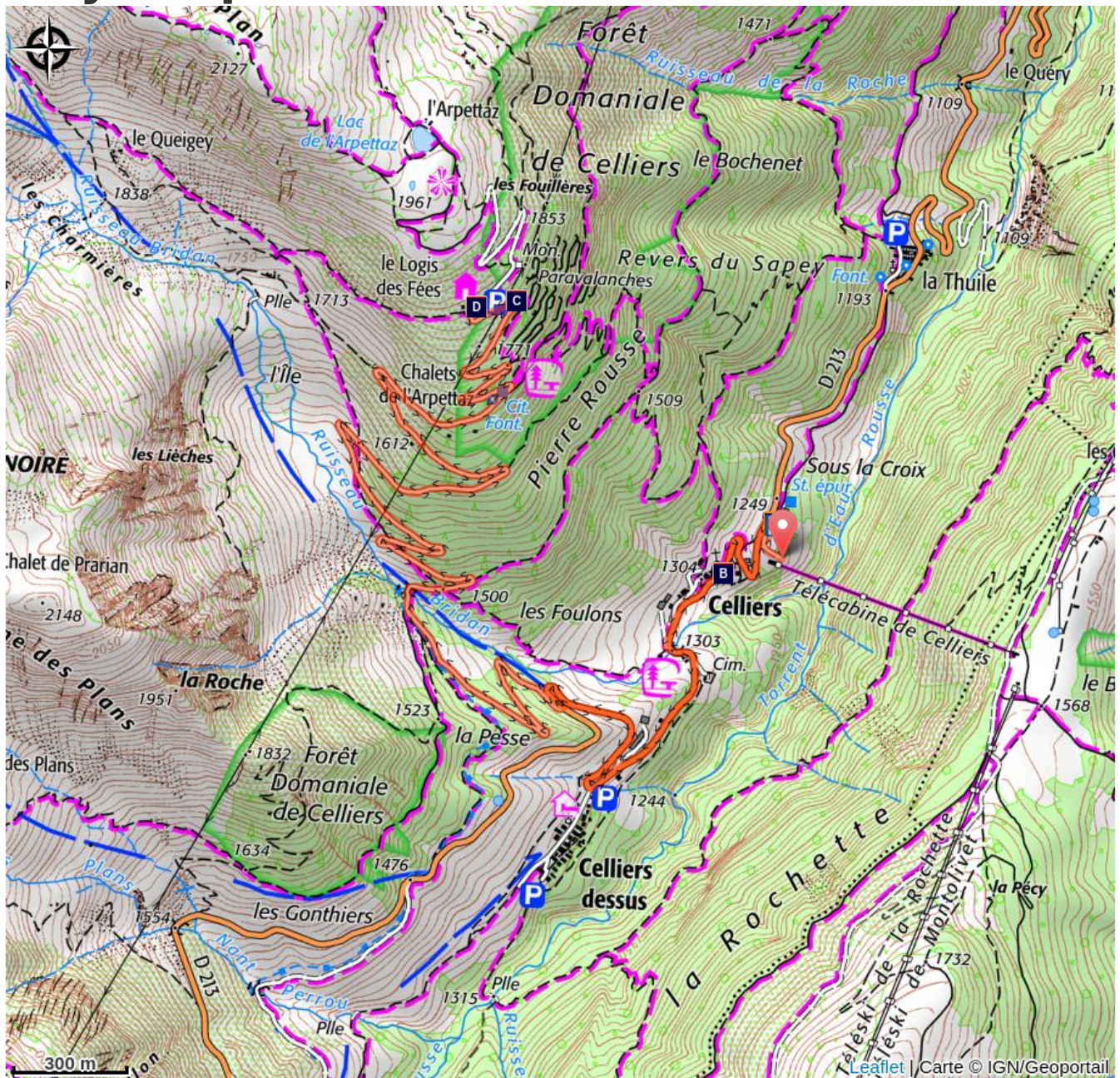
Immeuble Les Arcades  
73260 DOUCY COMBELOUVIERE  
+33 (4) 79 24 30 32



### **Sport 2000 Mottet Sports**



333 rue de la petite prairie - Face Super U  
73260 AIGUEBLANCHE  
+33 (0)4 79 24 53 17



# On your path...



-  Le Plan sheep farm (A)
-  A trail in discovery of the avalanche galleries (C)

-  Celliers La Chapelle village (B)
-  Logis des Fées refuge (D)

# All useful information

## **Advices**

Rando Vanoise has been designed to help you pick and choose your outings, but cannot be held liable where they are concerned. The mountain offers up a wide range of routes and trails for cyclists of all levels, but remember, it is a living, unpredictable environment and it is important that you head out suitably equipped. Ask advice from cycle rental operators.

If in doubt, you can take an introductory lesson in how to ride an electric bike with an instructor.

If you see a herd ahead, slow down and go round it. If there is a patou, a guard dog, climb down from your bike and walk, pushing it alongside you. Avoid making any sudden or aggressive gestures towards the dog and move away from the herd slowly and calmly. The dog will only be checking that you do not pose a threat to its herd. Respect the parkland and close gates behind you after you've gone through them.

The mountain is living, please respect it by staying on the paths and tracks.

## **How to come ?**

### Transports

Train services run as far as Petit-Coeur-la-Léchère

Find out more at: [www.oui.sncf.com](http://www.oui.sncf.com)

You can then catch a taxi to Celliers.

Have you also thought about car sharing?

### Access

From Moûtiers or Albertville, take the RN90 road and come off at junction 36 to Feissons-sur-Isère. Turn on to the D213 and continue on to Celliers.

### Advised parking

Car park at the Celliers Gondola 73260 Celliers



## **Information desks**

### **Office de Tourisme La Léchère-les-Bains**

Immeuble les Eaux Claires, 73260 La Léchère-les-Bains

[lalecherelesbains@valmorel.com](mailto:lalecherelesbains@valmorel.com)

Tel : 04 79 22 51 60

<https://lalecherelesbains.valmorel.com>

### **Office de Tourisme de Valmorel et des Vallées d'Aigueblanche**

Bourg Morel, 73260 Valmorel

[info@valmorel.com](mailto:info@valmorel.com)

Tel : 04 79 09 85 55

<https://www.valmorel.com>

# On your path...

---



## Le Plan sheep farm (A)

Carole would be delighted to show you round her sheep farm, which is full of lambs come spring. You can also buy your farmhouse ewe's milk cheeses there, including Tommes, semi-mature cheese and fromages blancs, every Thursday from 15:00 until 17:30 and daily from 17:30. Or you can call ahead on +33 (0)6 45 16 52 96.

Attribution : CCVA

---



## Celliers La Chapelle village (B)

The picturesque little village of La Lauzière has the benefit of its own gondola leading directly to the resort of Valmorel. Located along the road of the famous Col de la Madeleine mountain pass in summer, in winter the road does not climb further than the village. This is also the start point for a range of hikes in summertime.

Attribution : Pamplemousse

---



## A trail in discovery of the avalanche galleries (C)

In wintertime, Celliers sits within a circle of avalanche paths. Considerable resources, as you will discover, have been harnessed to provide protection from these natural phenomena. Ideal for the whole family, this 3.5km educational trail will help you to understand how communities first of all lived "with" avalanches before undertaking extensive work from the 1950s so that residents in the 5 hamlets could go about their lives safely all year round.

Attribution : ONF\_RTM

---



## Logis des Fées refuge (D)

Perched at an altitude of 1,839m, this refuge is open all year round for meals. And while you're there, don't miss the sweeping views from outside!

Please book ahead for bed and board: +33 (0)4 79 22 13 64.

Attribution : CCVA