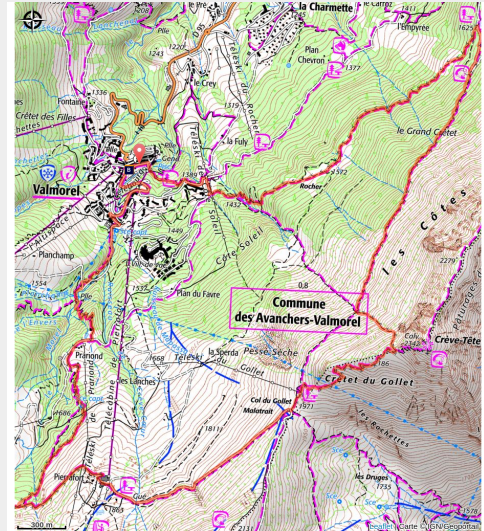


Loop of Crève-Tête (B15 - by Valmorel)

Vanoise - LES AVANCHERS-VALMOREL



Sentier en ligne de crête, au sommet de Crève-Tête (CCVA)



Discover the many viewpoints (Mont-Blanc, Ecrins, Vanoise...) of the "vulture's" high altitude walk.

Surmontée d'une croix, le promontoire de Crève-Tête vous promet un **panorama époustouflant sur le Mont-Blanc, la Vanoise, la Lauzière ou encore la vallée des Belleville. Sans doute l'un des plus beaux belvédères des Alpes françaises !** Pour cela, il vous faudra braver quelques alpages pentus et une ascension finale assez raide. Pas d'inquiétude : la télécabine de Pierrafort reste une option pour vous simplifier une partie de l'itinéraire. Au sommet de Crève-Tête, le sentier en ligne de crête réserve encore de superbes points de vue, avant de regagner la forêt.

Useful information

Practice : Walking hike

Duration : 8 h

Length : 12.9 km

Trek ascent : 961 m

Difficulty : Challenging

Type : Loop

Themes : Flora , Summit , Viewpoint

Accessibility : Joëlette

Trek

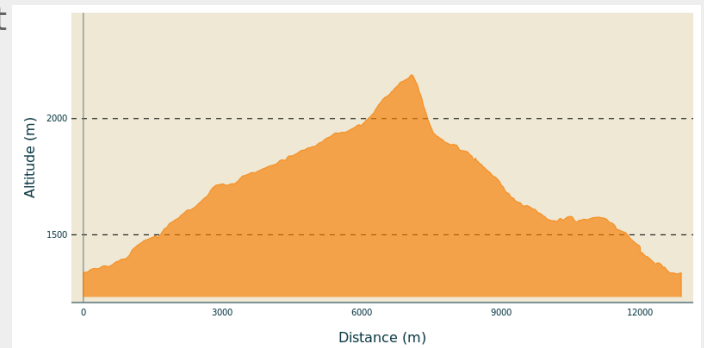
Departure : Valmorel ski resort, Pierrafort ski lift (top or bottom)

Arrival : Valmorel ski resort, Pierrafort ski lift (top or bottom)

Markings : ■ PR

Cities : 1. LES AVANCHERS-VALMOREL
2. SAINT-JEAN-DE-BELLEVILLE

Altimetric profile



Min elevation 1332 m Max elevation 2189 m

Begin the loop at Valmorel at the foot of the Pierrafort chairlift (1 380m). Alternatively, take this chairlift and start from the top.

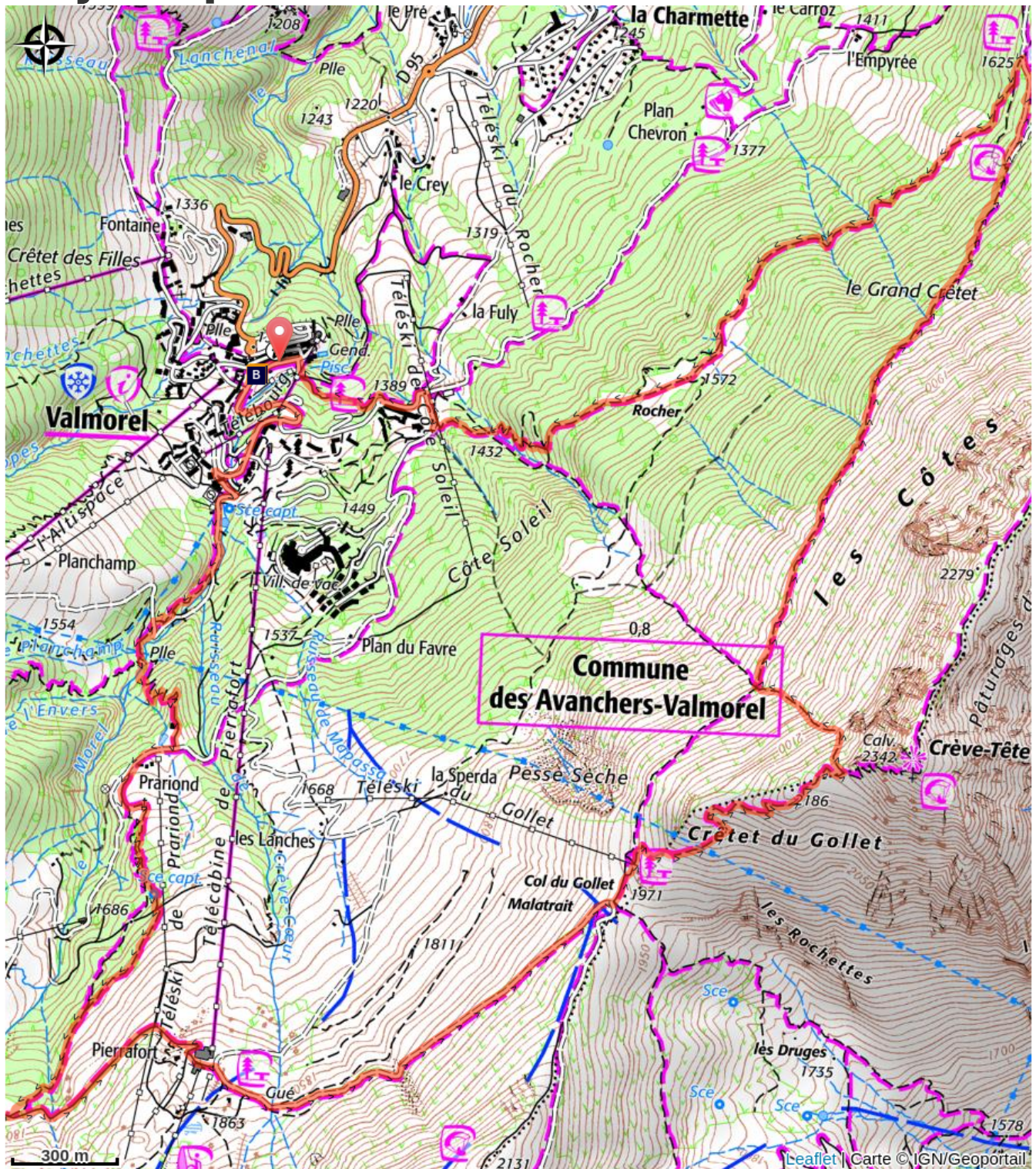
From the ski resort, take the forest path up along the Morel torrent and enter the woods until the Priarond (1 580m), a chalet restaurant and doorway to the alpine pastures of the Pierrafort mountain.

Continue within a semi-forest and semi-pasture surrounding, taking a left hand turn at the Saint-Roch oratory. After a short stairway, take a path which follows the hillside until arriving at Pal Salin (1 760m) at the heart of a beautiful open space. Follow the Pierrafort signs (docking at 1 835m) and continue along a large road to the Col du Gollet (1 981m).


A final steep hill will take you to Crève-Tête. At the summit (2 342m), a cross marks a 360° view over many natural landmarks: Mont-Blanc, Vanoise, Lauzière, Belleville Valley...

Descend along the Crève-Tête Crete while admiring the surrounding landscapes. The path then takes you through the forest until arriving at the Pierre Larron chalet, followed by the Bachals chalet. The woods then open up as the hike ends up once again in Valmorel.

On your path...



 E-bike rental shop: Valmo'bike (A)

 E-bike rental shop: Sun Bike Shop (B)

All useful information

Advices

Difficult passage on the final ascension to Crève-Tête, not recommended for people who have a strong fear of heights.

Be careful, mountain bikes can cross pedestrians on the forest area.

How to come ?

Access

From Albertville, RN90 (exit 37), RD97 (through La Léchère), then RD97A (through Bellecombe) then RD95 up to Valmorel.

From Moûtiers, RN90 (exit 38), RD92 (through d'Aigueblanche), then RD94 until the round-about and RD95 up to Valmorel.

Advised parking

Valmorel, car parks P4,P5 or P6

Accessibility

 Joëlette

Information desks

Office de Tourisme de Valmorel et des Vallées d'Aigueblanche


Bourg Morel, 73260 Valmorel

info@valmorel.com

Tel : 04 79 09 85 55

<https://www.valmorel.com>

On your path...

 E-bike rental shop: Valmo'bike (A)

Valmo'Bike
Bourg Morel
73260 Les Avanchers

+33 (0)6 09 94 23 47

 E-bike rental shop: Sun Bike Shop (B)

Sun Bike Shop
Bourg Morel
73260 Les Avanchers

+33 (0) 6 50 77 62 09