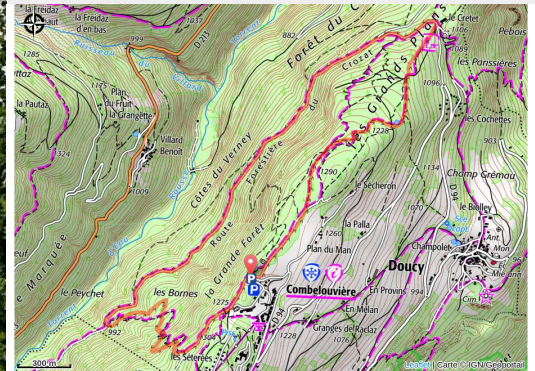


The Great Forest (B22)

Vanoise - LA LECHERE



Vue sur la pointe des Marmottes Noires (ccva)



An itinerary in the Great Forest of Doucy, overlooking the Lauzière massif.

Useful information

Practice : Walking hike

Duration : 3 h

Length : 6.8 km

Trek ascent : 377 m

Difficulty : Easy

Type : Loop

Themes : Flora , Viewpoint

Accessibility : Joëlette

Trek

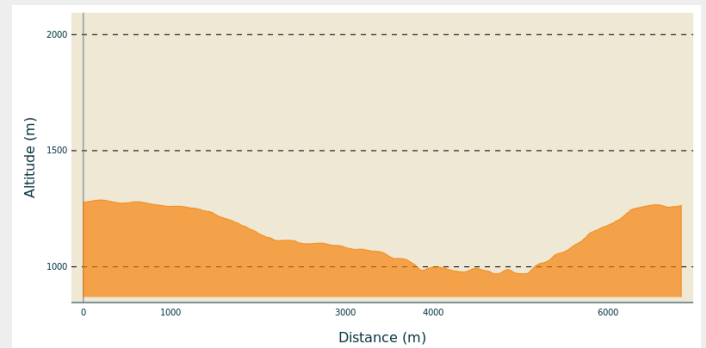
Departure : Doucy ski station

Arrival : Doucy ski station

Markings : — PR

Cities : 1. LA LECHERE

Altimetric profile



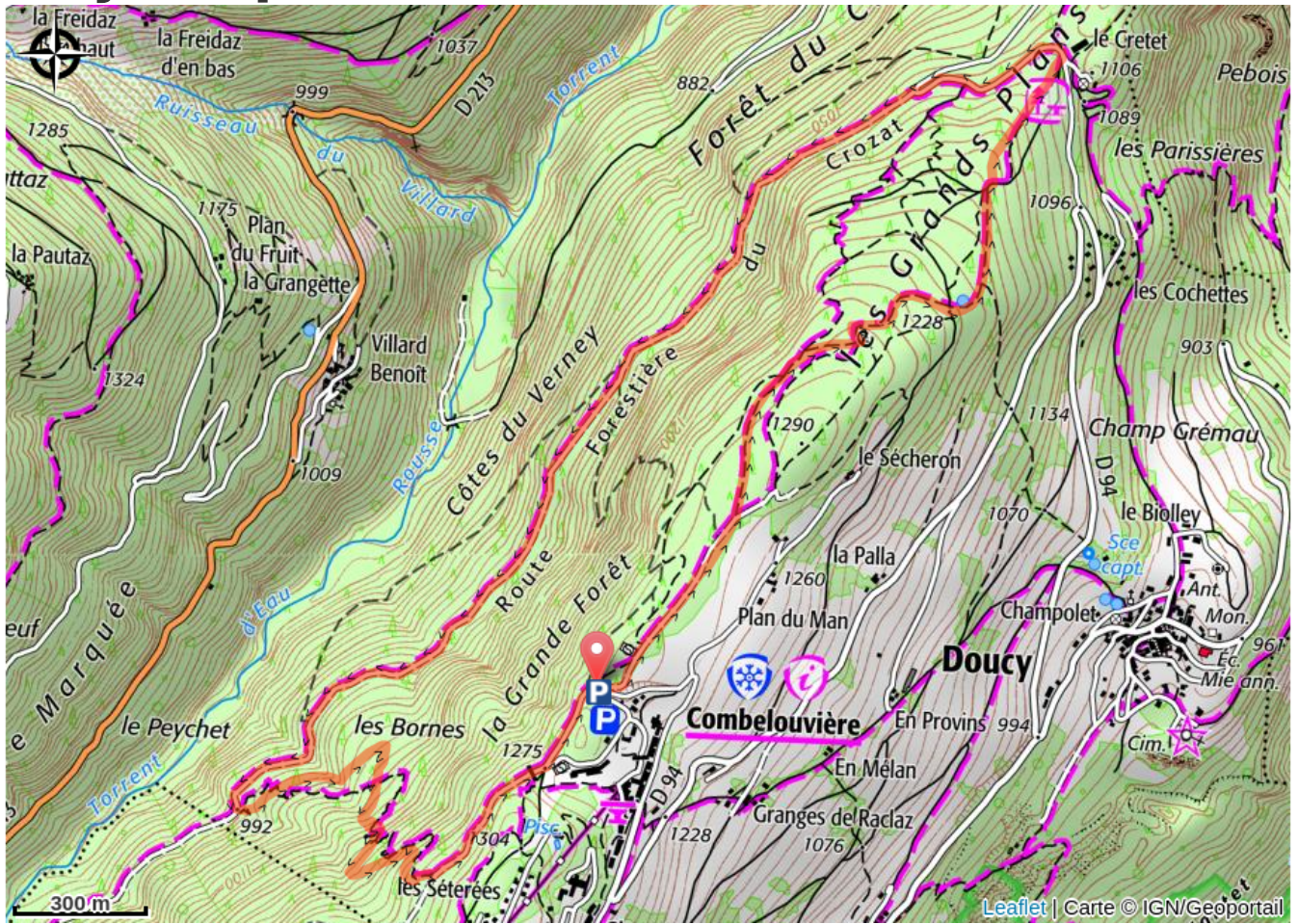
Min elevation 970 m Max elevation 1288 m

Begin the loop at Doucy ski station at the car park behind the 'Cap vacances' building. For the first kilometre, stroll along a flat forest path, past a skate park and a sports pitch. The downhill slope then leads to Crétet (1120m).

From then on, take the road on the left which borders the 'Grande Forêt' and the 'Forêt du Cudray' for 2.5 kilometres before taking a left turn. The next, quite steep, incline leads to an old road which used to link Doucy ski station to Celliers and the Madeleine Col before the 1997 landslide.

Then go straight ahead to arrive back at Doucy car park.

On your path...



All useful information

Advices

This hike may present some difficulties for beginners on the section which heads back up to Doucy.

How to come ?

Access


From Albertville, RN90 (exit 37), RD97 (through La Léchère), then RD94 until Doucy ski station.

From Moûtiers, RN90 (exit 38), RD92 (through Aigueblanche), then RD94 until Doucy ski station.

Advised parking

Doucy ski station, behind the 'Cap vacances'

Accessibility

 Joëlette